



sangetsu

STAIN PREVENTION



EVAL BARRIER CLOTH



フィルム汚れ防止壁紙

Stain Prevention



ISO 22196 無機抗菌剤・練り込み・表面層
抗菌加工 JPO122489X0002J

Wallpaper that is Resistant to Stains and Scratches due to the effect of EVAL® Film

1. Isolated stains, excellent chemical resistance

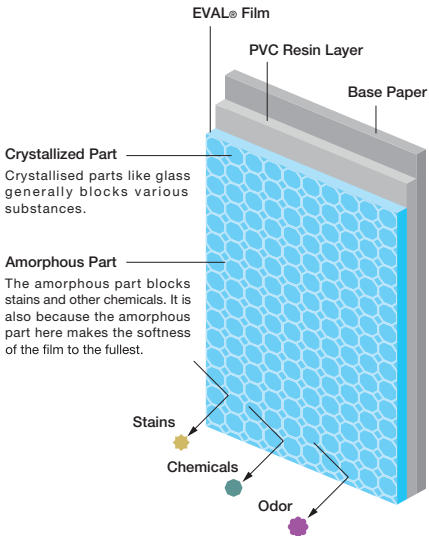
It can be cleaned with water or a neutral detergent and has excellent stain resistance. In addition, it has excellent chemical resistance and antibacterial properties.

2. Excellent antibacterial properties, long-lasting cleaning

The wallpaper surface is finished with a high-safety EVAL® film that is also used in food packaging. It effectively inhibits the reproduction of bacteria such as Escherichia coli, Staphylococcus aureus and MRSA.

3. Prevent surface scratches

The EVAL® film has excellent surface strength and is effective in preventing scratches and flaking caused by hard objects.



■ Stain Resistance Test Results

Contamination	EVAL Wallpaper			Ordinary PVC Wallpaper		
	Water	Neutral Detergent	Alcohol	Water	Neutral Detergent	Alcohol
Coffee	◎	◎	◎	△	△	△
Soy Sauce	◎	◎	◎	×	△	△
Sauce	◎	◎	◎	×	×	×
Orange Juice	◎	◎	◎	○	◎	◎
Water-based Wall	○	◎	◎	×	×	×
Crayon	△	◎	◎	×	×	×
Oily Pen	×	×	◎	×	×	×
Lipstick	△	◎	◎	×	×	×

[Evaluation Criteria]

Based on the antifouling wallpaper performance test of the Wallpaper Industry Association, the pollutants are based on our benchmark.

[Judgment Criteria]

Based on JIS L 0805: Grade 1 (Bad XX) - Grade 5 (Excellent OO) Degree of Pollution

※ Evaluation of anti-fouling performance 24 hours after contamination of various pollutants.

◎ : Grade 5 No stains remain

○ : Grade 4 Almost no stains remain

△ : Grade 3 Some stains remain

×

× × : Grade 1 Thick stains remain

■ Chemical Resistance Test Results

Chemical Name	EVAL Wallpaper	Ordinary PVC Wallpaper
Sodium Chlorite (6%)	◎	◎
Anhydrous Alcohol (99.5vol%)	◎	◎
Ammonia Water (25%)	◎	◎
Hydrogen Peroxide (3.5w/v%)	◎	◎
Povidone Iodine (7%)	○	△
Hydrochloric Acid (9.5%)	◎	◎
Ammonium Phthalate Solution (10%)	◎	◎
Formalin (37%)	◎	◎
Cresol Soap Liquid (3%)	◎	○
Banana water	◎	○
Compound Iodine Solution	○	×
Rivano	○	△
MEK	◎	○

[Test Method] Based on the JIS K 6902B, pollutants are based on our standards.

◎... No Change ○... Small Change △... Changed ×... Clear Change

■ Antibacterial Performance Comparison Table

	Escherichia Coli		Staphylococcus Aureus		MRSA	
	After inoculation	After 24 hours	After inoculation	After 24 hours	After inoculation	After 24 hours
EVAL Wallpaper	1.2 x 10 ⁴	< 0.63	1.1 x 10 ⁴	< 0.63	1.2 x 10 ⁴	< 0.63
Polyethylene Film	1.2 x 10 ⁴	1.5 x 10 ⁶	1.1 x 10 ⁴	3.6 x 10 ⁴	1.2 x 10 ⁴	7.6 x 10 ⁴

[Test Method] Based on the anti-bacterial test specified by the Wallpaper Industry Association.

■ Stain Removal Performance Comparison



Film Dirt Prevention Wallpaper



General Vinyl Wallpaper

[Test Method] The wallpaper surface was written with a crayon and wiped with ethanol.

※ Test results are measured values. not guaranteed values.



Antiviral Wallpaper

Effective against viruses



POINT

Decompose the virus attached to the surface of the wallpaper! Excellent antibacterial properties, helping to create a better hygienic environment.

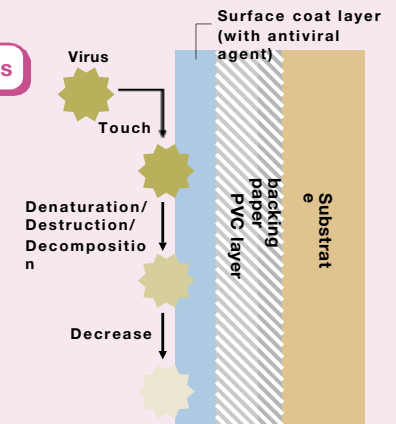
It works to suppress the growth of bacteria as well as viruses.

Add a peace of mind to the room you live in every day!



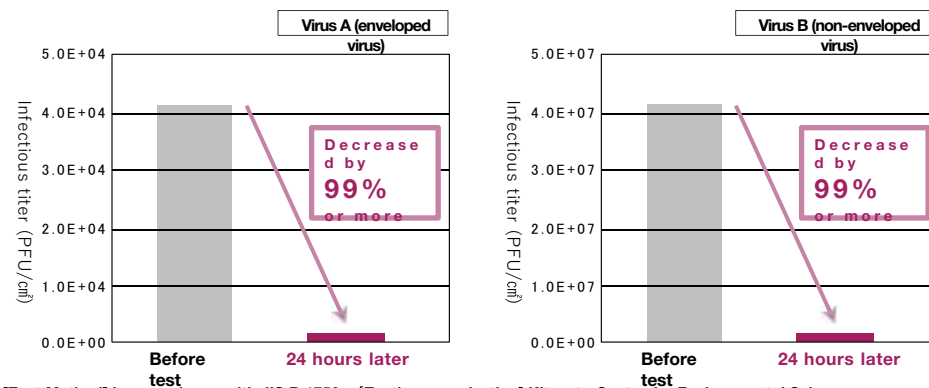
How Antiviral Wallpaper Works

Antiviral ingredients denature and destroy the proteins of the virus surface layer and further decompose organic components. Effective against viruses adhering to wallpaper surfaces.



Various functional data

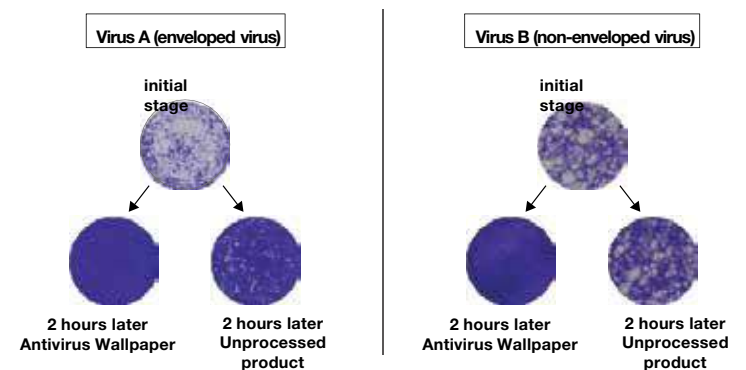
Antiviral performance test results



[Test Method] In accordance with JIS R 1756. [Testing organization] Kitasato Center for Environmental Science
※The above are measured values with typical specifications, not guaranteed values.

Antiviral test (plaque method) results

The white areas (plaques) are traces of cells being invaded by the presence of the virus.

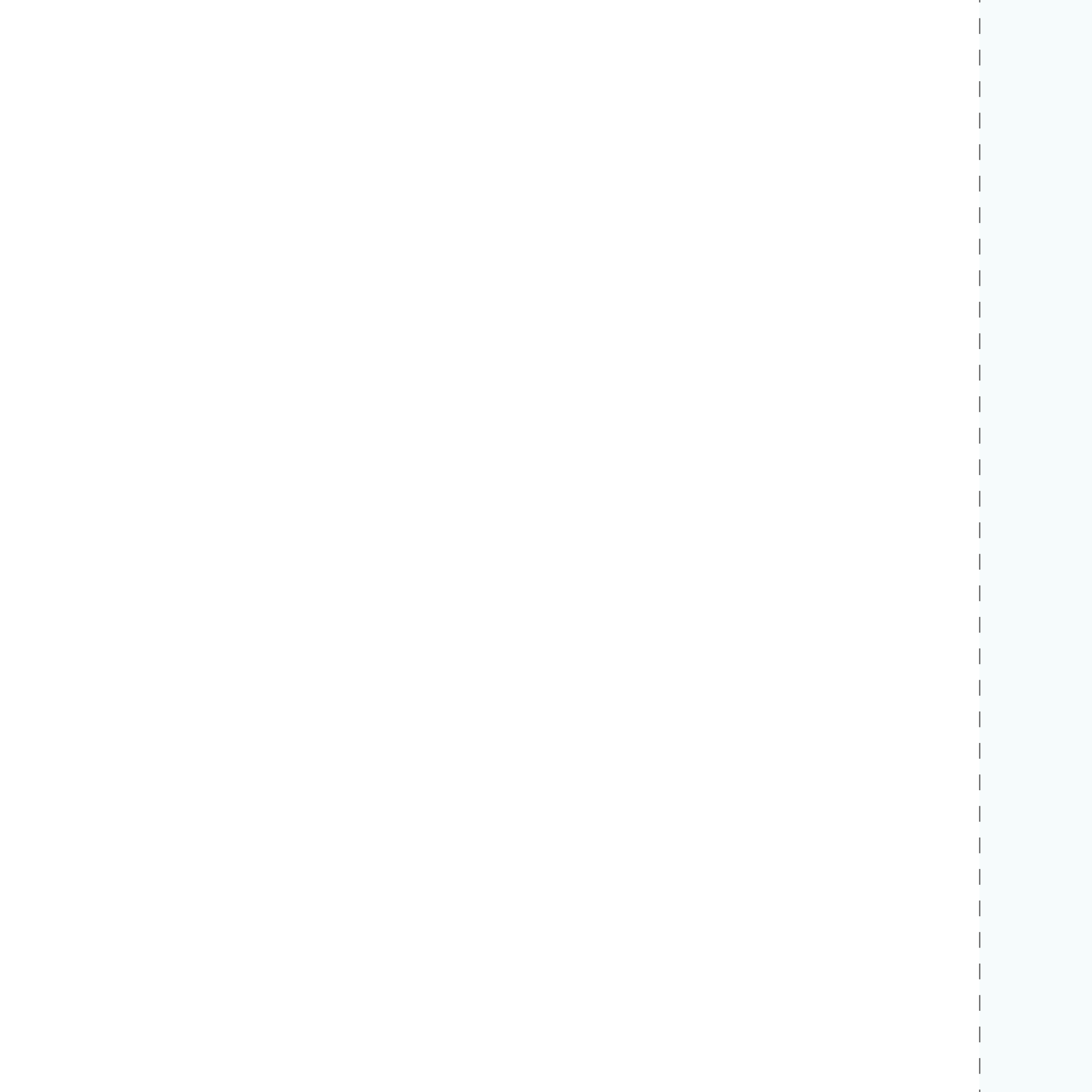


Antibacterial Performance Comparison Table

It has the performance of the specified value [<0.63].	Bacteria A		Bacteria B		Bacteria C	
	After inoculation	After 24 hours	After inoculation	After 24 hours	After inoculation	After 24 hours
Antiviral Wallpaper	1.3×10^4	< 0.63	1.4×10^4	< 0.63	1.2×10^4	< 0.63
Unprocessed Test Piece (Polyethylene film)	1.3×10^4	5.1×10^5	1.4×10^4	5.8×10^4	1.2×10^4	5.0×10^4

[Test method] Conforms to the antibacterial wallpaper performance test prescribed by the Wallpaper Industry Association.

※Test results are measured values, not guaranteed values.
※Reduces the number of specific viruses on the product.
※Antiviral wallpaper is not intended to treat or prevent any disease.
※There is no effect of degrading or evading the virus itself.
※Effective against viruses and bacteria attached to the wallpaper surface.
※There is no effect to promote or reduce adsorption of viruses in the air.
※The test results were targeted at specific viruses and bacteria, and not the effect on all viruses and bacteria.



WOODS



RE53282



RE53282



RE53284

RE53284





RE53285

RE53285





RE53289

RE53288





RE53302



RE53303



RE53303



RE53417

STONE



RE53089





RE53198



RE53199



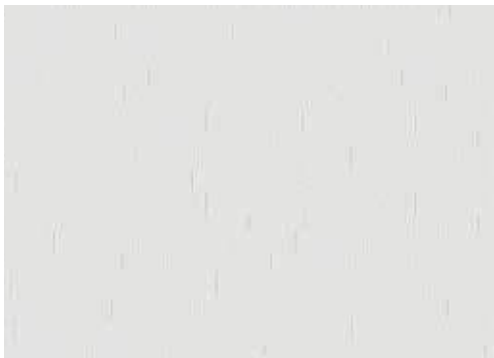
RE53324



RE53322



RE53323



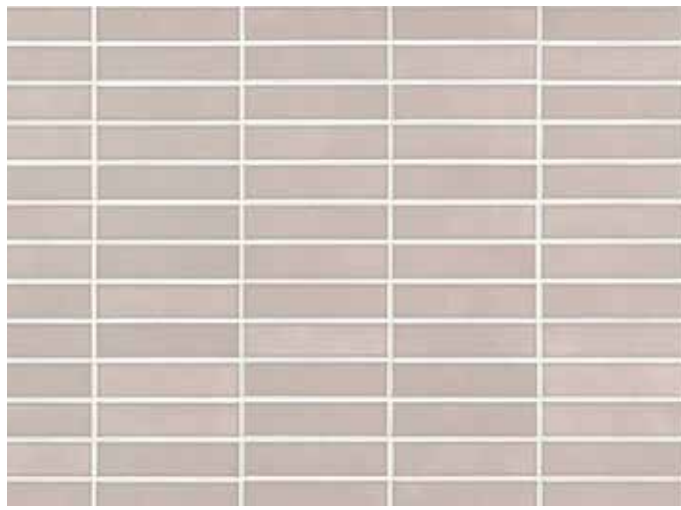
RE53332



RE53334



RE53333



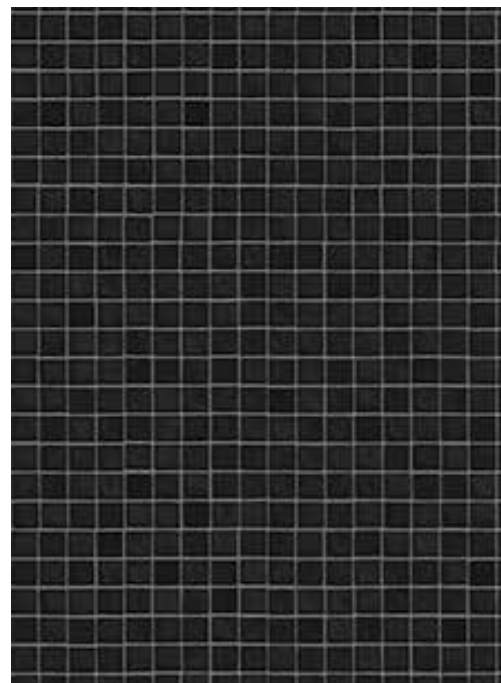
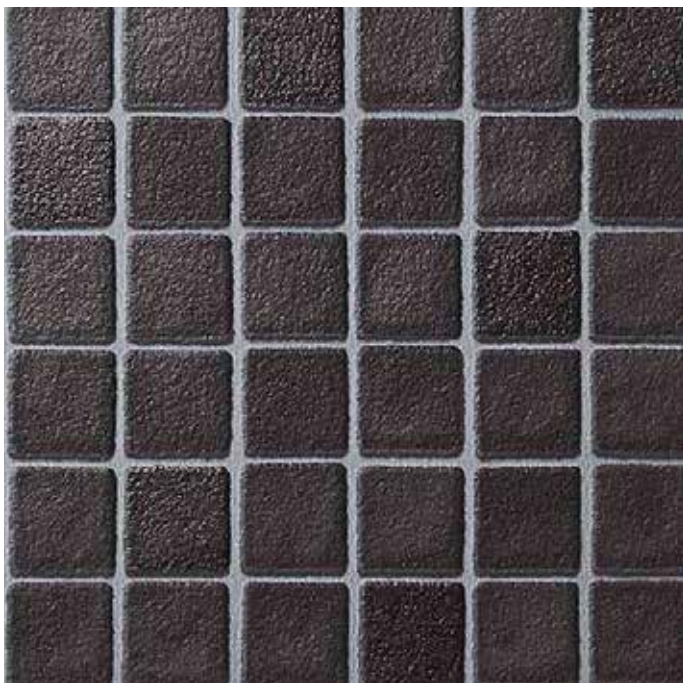
RE53336



RE53336



RE53342





RE53357



RE53357



RE53362





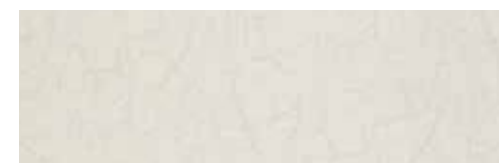
RE53371

RE53371





RE53375



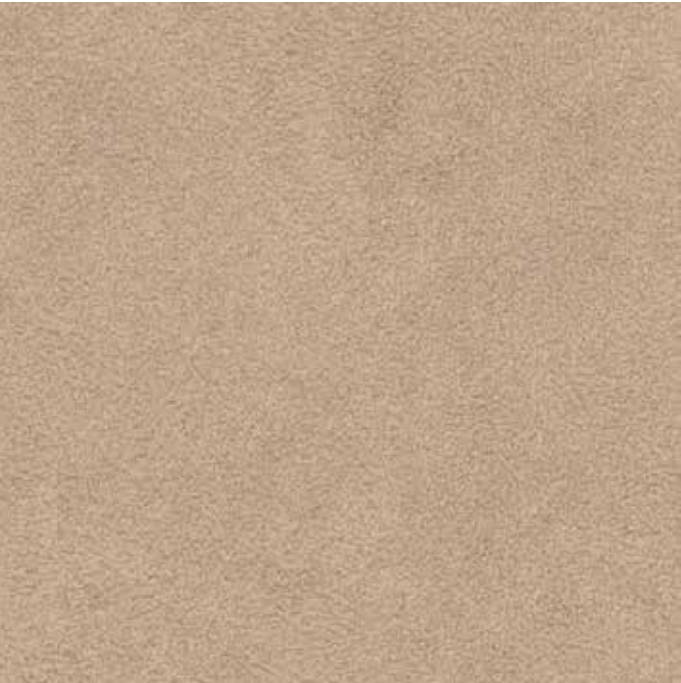
RE53374

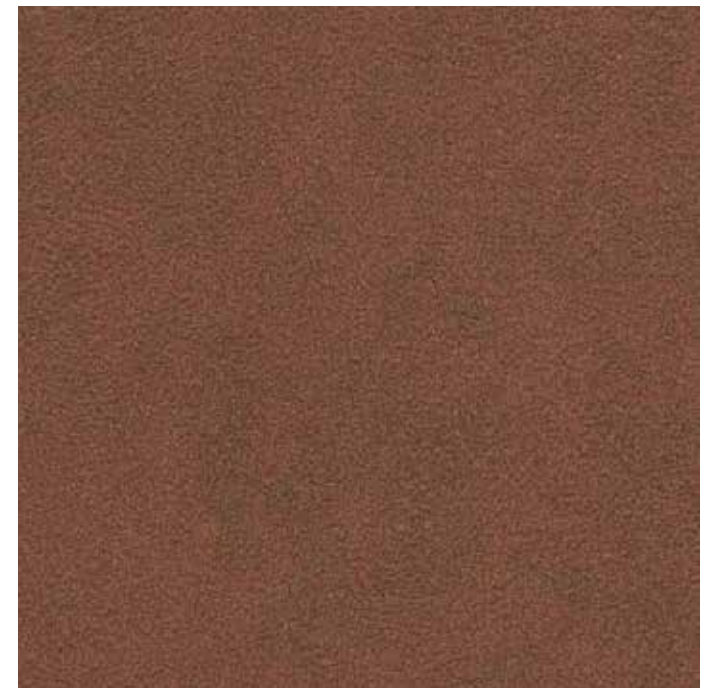


RE53375



RE53376





RE53377

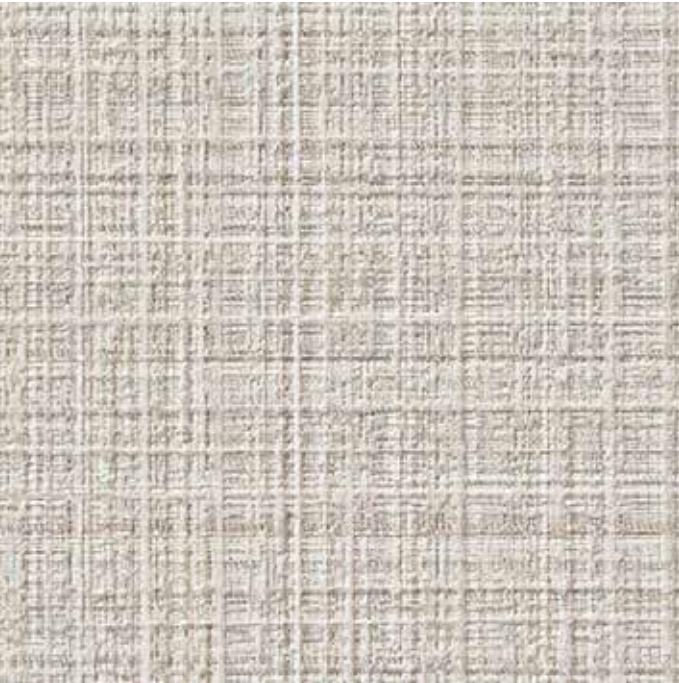


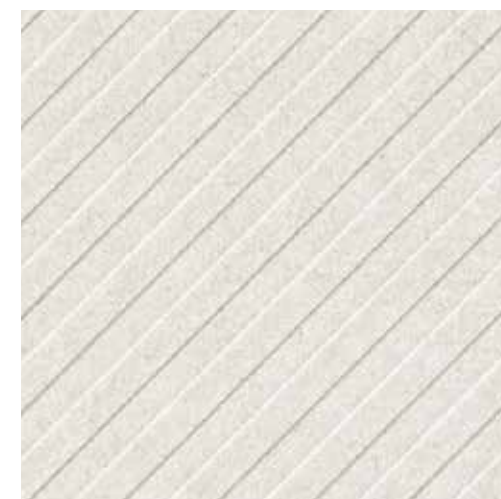
TEXTILES



RE53004

RE53004





RE53012

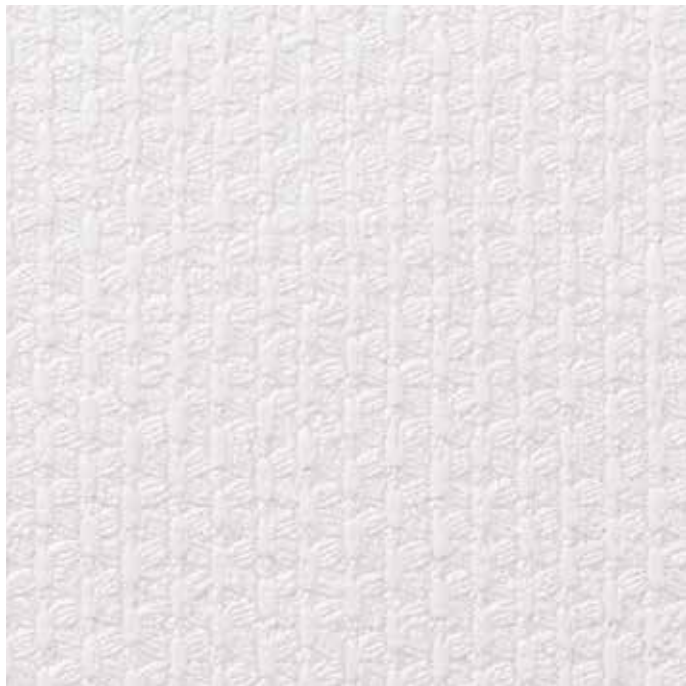


RE53014



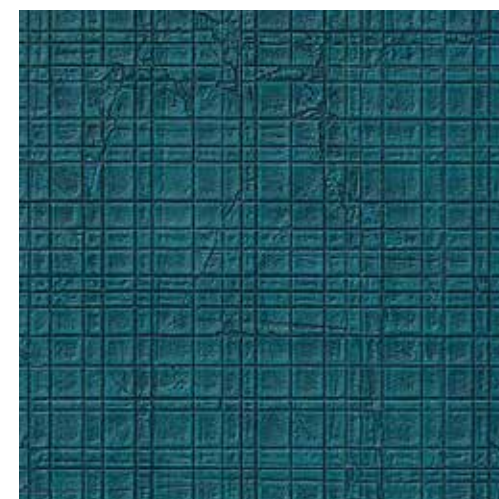
RE53126

RE53124

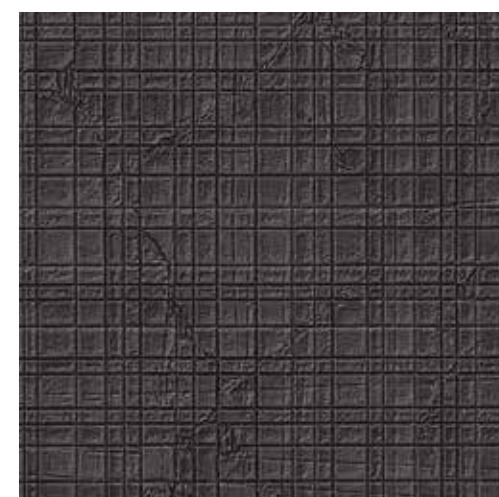




RE53204



RE53204



RE53205



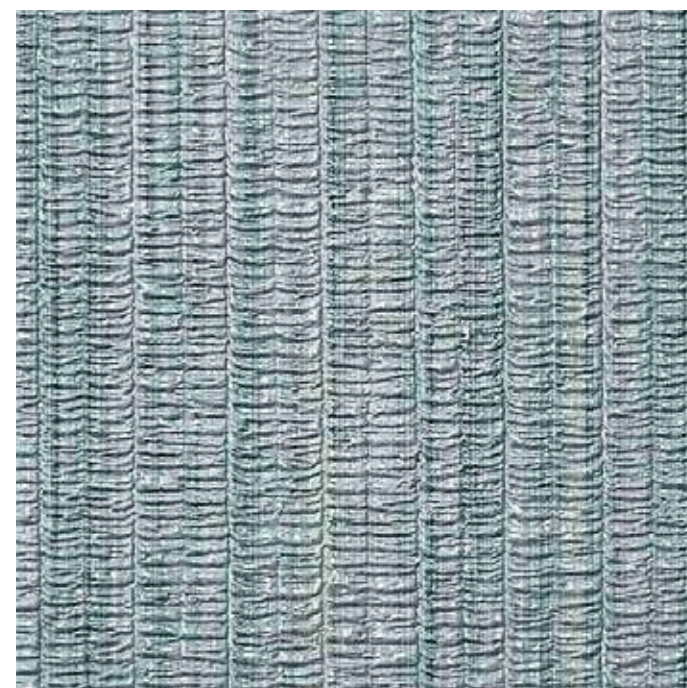
RE53207

RE53207





RE53212



RE53212



RE53220

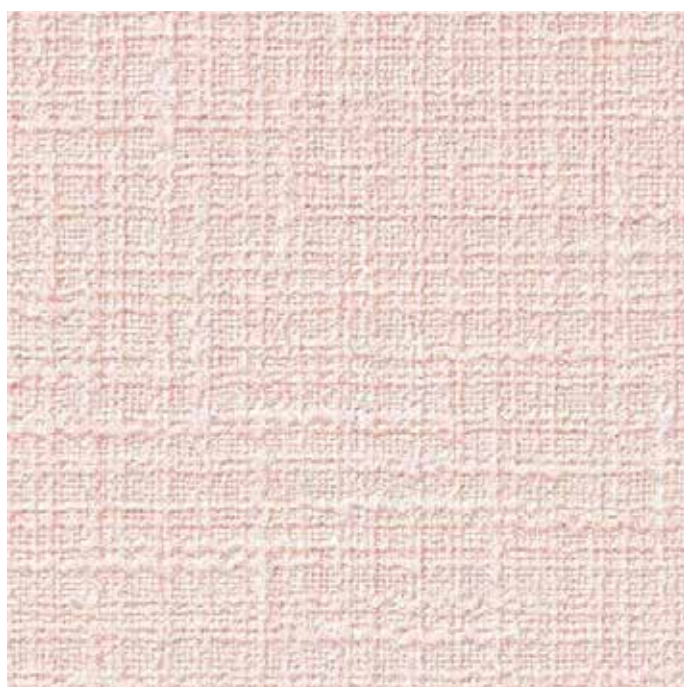


RE53220



RE53244

RE53244

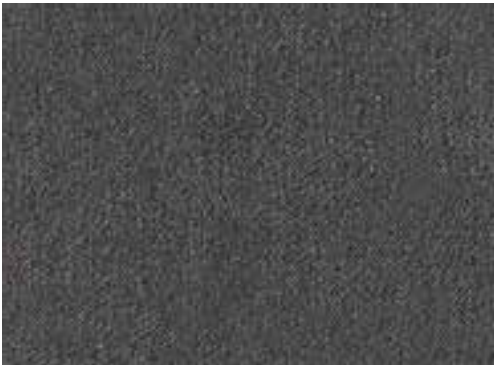
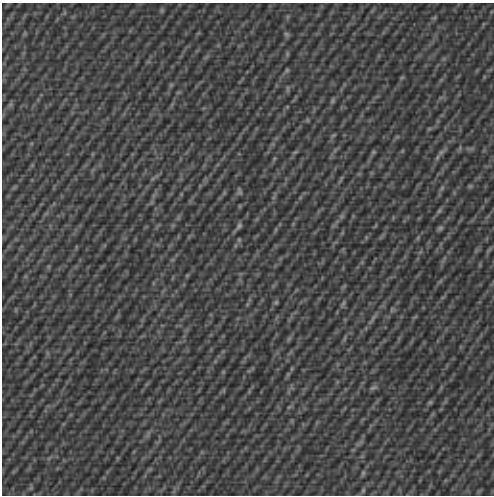




RE53277



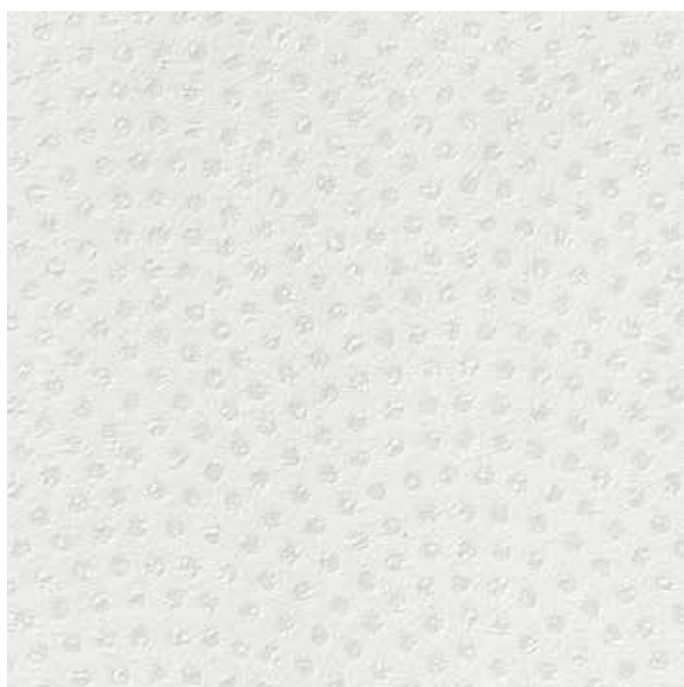
RE53276



RE53277



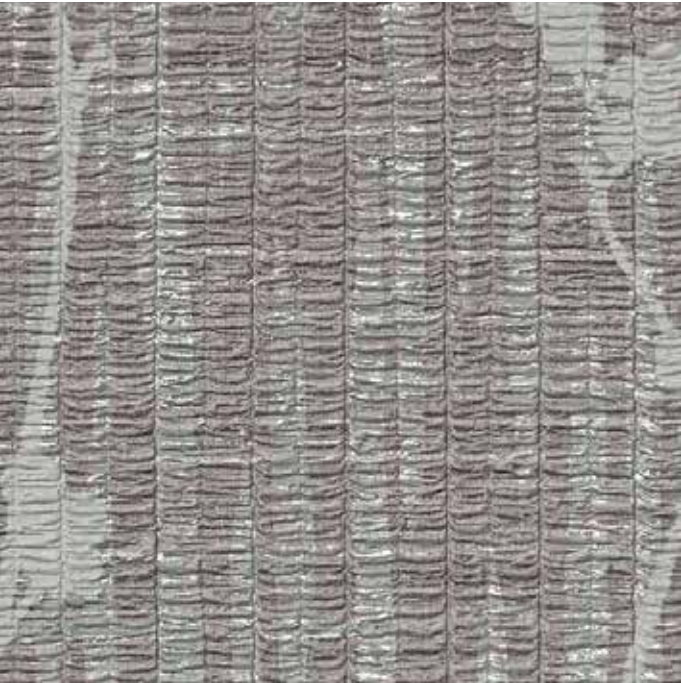
RE53381



PATTERNS



RE53386





RE53461



RE53462



RE53465



RE53466



RE53466



RE53471



RE53471



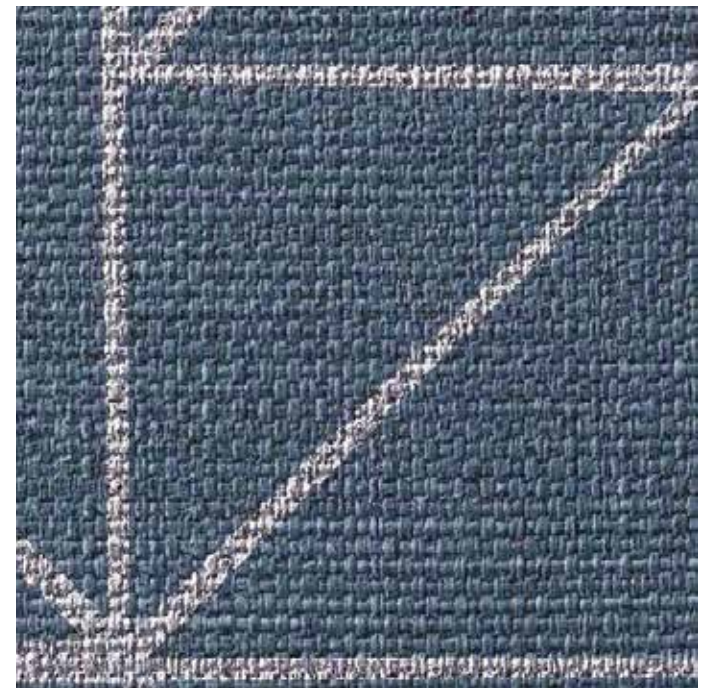
RE53472



RE53473

RE53473





RE53489

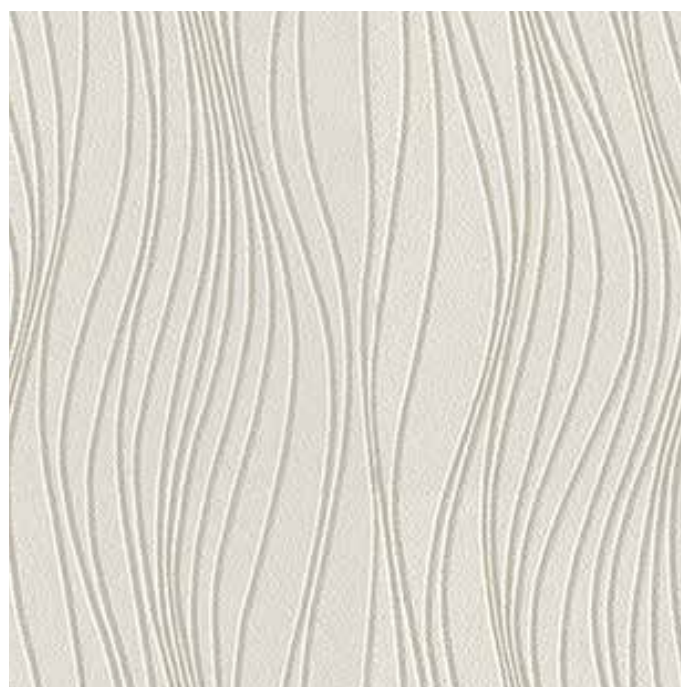


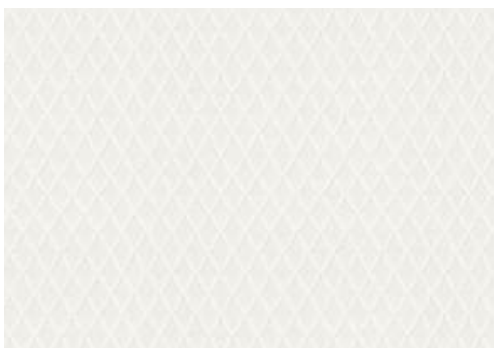
RE53489



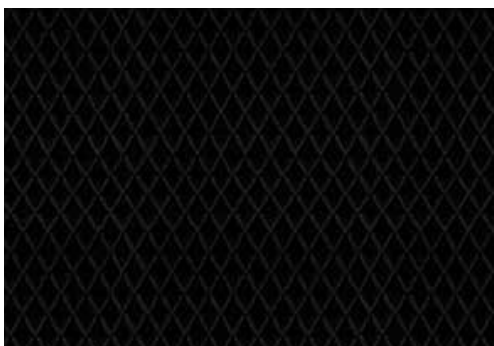
RE53496

RE53496





RE53498



RE53499



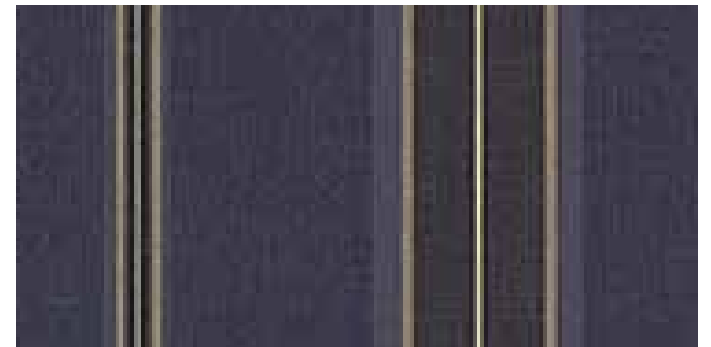
RE53498 + RE53499



RE53505



RE53505

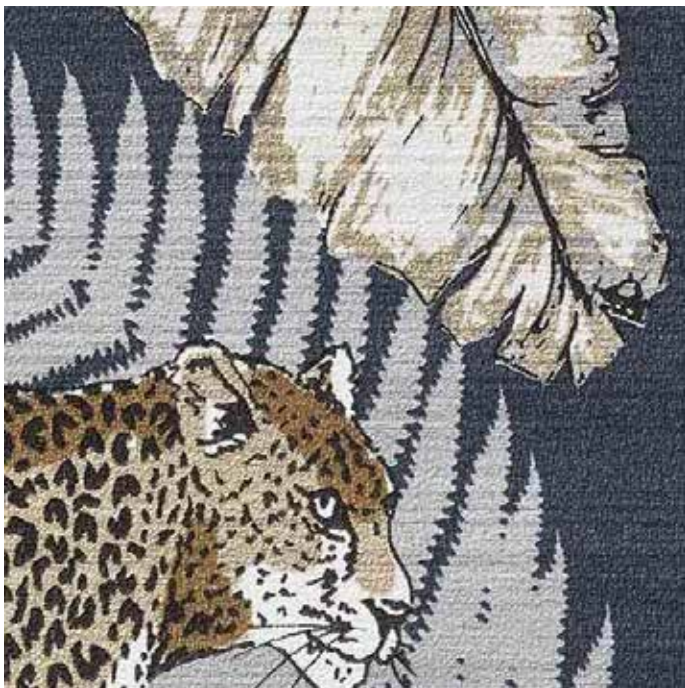


RE53510

RE53510



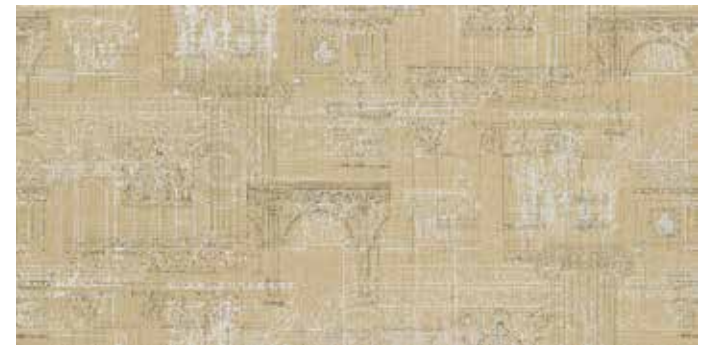
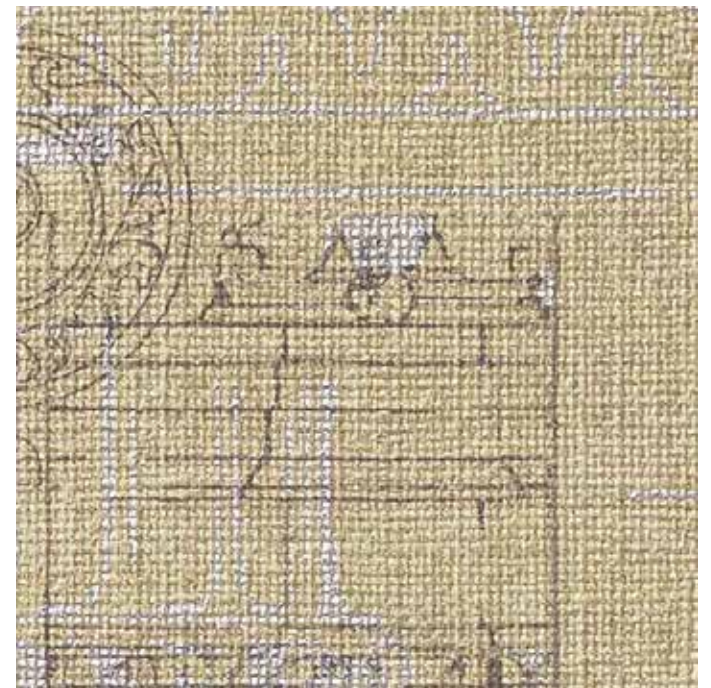
RE53515



RE53515



RE53518



RE53518



RE53586



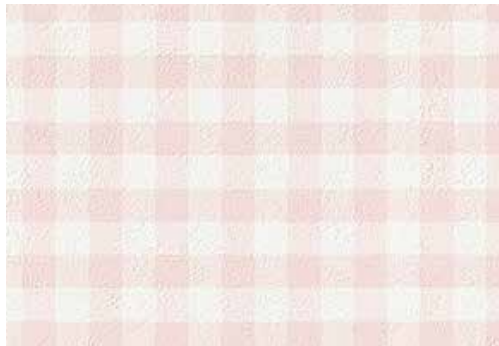
RE53587



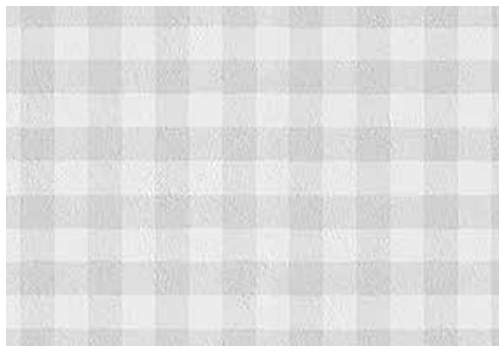
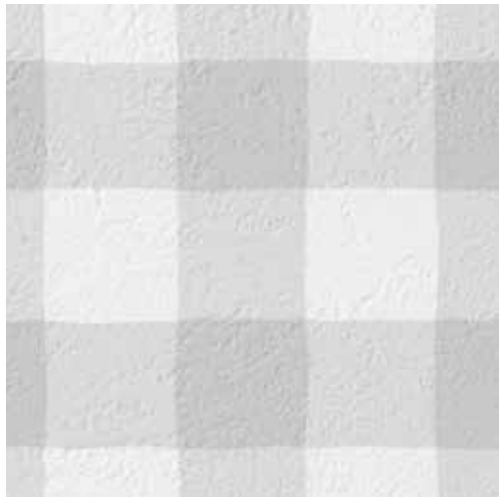


RE53599





RE53719



RE53720



RE53720



RE53826



sangetsu

いち